

NEW PALTZ PLAZA

258 MAIN STREET
NEW PALTZ, NY



PROJECT HIGHLIGHTS

- Anchored by ShopRite
- ±5,000 SF total, subdividable
- Available for immediate occupancy
- Pylon Signage Available
- Less than 1/4 Mile from I-87
- Approximately 5 Miles from Route 9W

PROJECT INFORMATION

- Total GLA: 48,720 sf
- Co-tenants: ShopRite & CareMount Medical
- Traffic Counts
 - Main Street: 21,217 ADT
 - I-87: 47,648 ADT
 - Route 9W: 25,399 ADT

CAREMOUNT
MEDICAL



nailspa



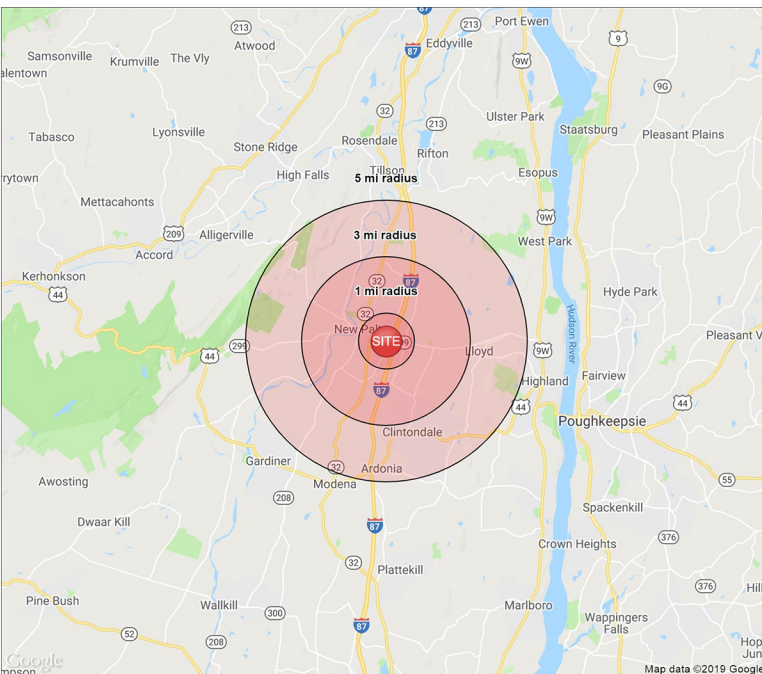
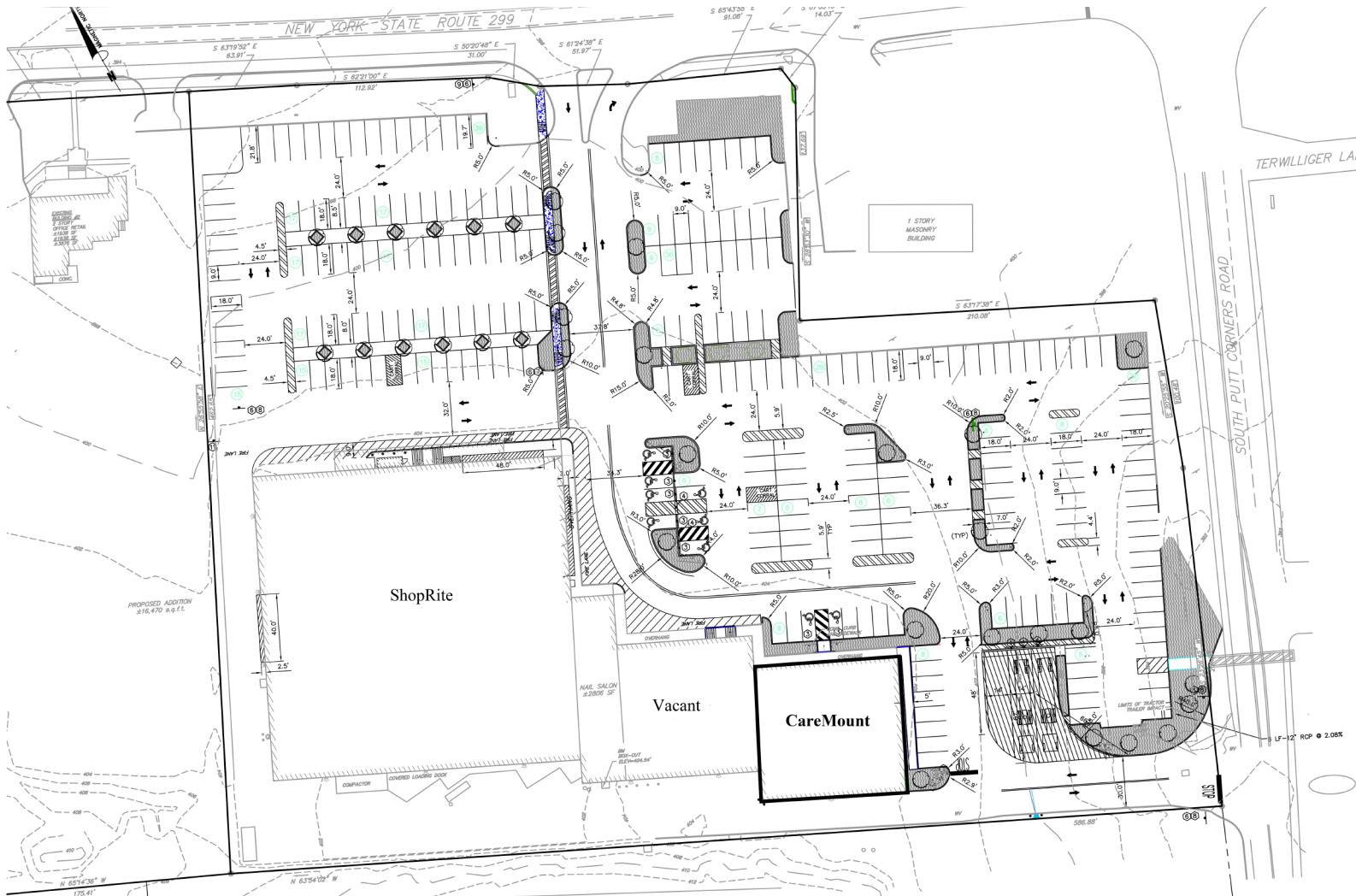
JARETT PARKER
410.406.5112
jparker@mcbrealestate.com

EMORY LYON CAMPER
443.530.0022
ecamper@mcbrealestate.com



NEW PALTZ PLAZA

258 MAIN STREET
NEW PALTZ, NY



DEMOGRAPHICS	1 Mile	3 Miles	5 Miles
Population	5,932	14,174	22,190
White	75.2%	80.3%	83.0%
Black	10.6%	8.3%	7.1%
Hispanic	12.9%	10.1%	9.7%
Other	1.3%	1.3%	0.2%
No. of Households	1,641	4,920	8,239
Average HH Income	\$68,063	\$87,599	\$93,355
Median HH Income	\$52,045	\$74,257	\$77,074
No. of Businesses	372	798	1,008
No. of Employees	3,339	7,666	10,263
Daytime Population	6,226	13,466	18,518

JARETT PARKER
410.406.5112
jparker@mcbrealestate.com

EMORY LYON CAMPER
443.530.0022
ecamper@mcbrealestate.com

