



IN-LINE AND OUTPARCEL | FOR LEASE POST COMMONS

4100 NORTH WICKHAM ROAD, MELBOURNE, FL 32935



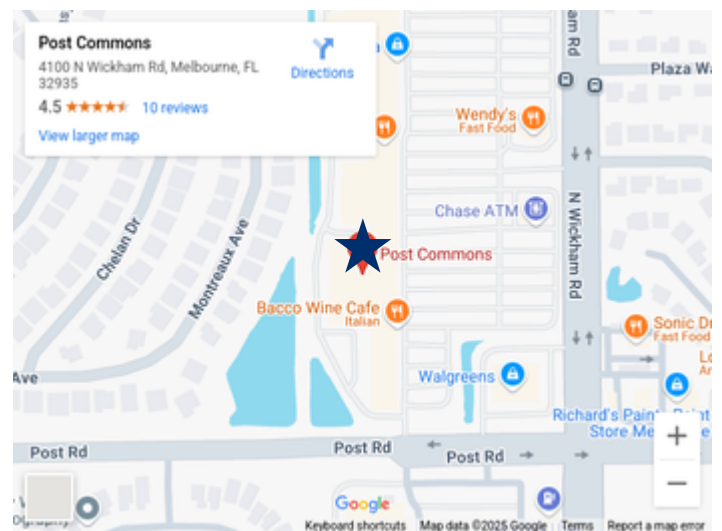
Highlights

- Excellent frontage along North Wickham Road (36,720 AADT) in one of Brevard County's busiest north/south corridors
- Across from Eastern Florida State College and the Maxwell C. King Center for the Performing Arts
- Tenants include Publix, Bealls Department Store, Bealls Outlet, Burlington, Five Below, Pet Supermarket and more
- Excellent inline opportunities available
- Outparcel opportunity Available for BTS or Ground Lease available on main road
- 1,200 - 6,300 SF of in-line space available.

Demographics

	1 Mile	3 Miles	5 Miles
Population	8,818	48,224	103,246
Median HH Income	\$102,941	\$91,493	\$94,487

Locator Map



Flavia Kanyago

Vice President, Sales and Leasing

(850) 264-3609

fkanyago@crossmarcservices.com

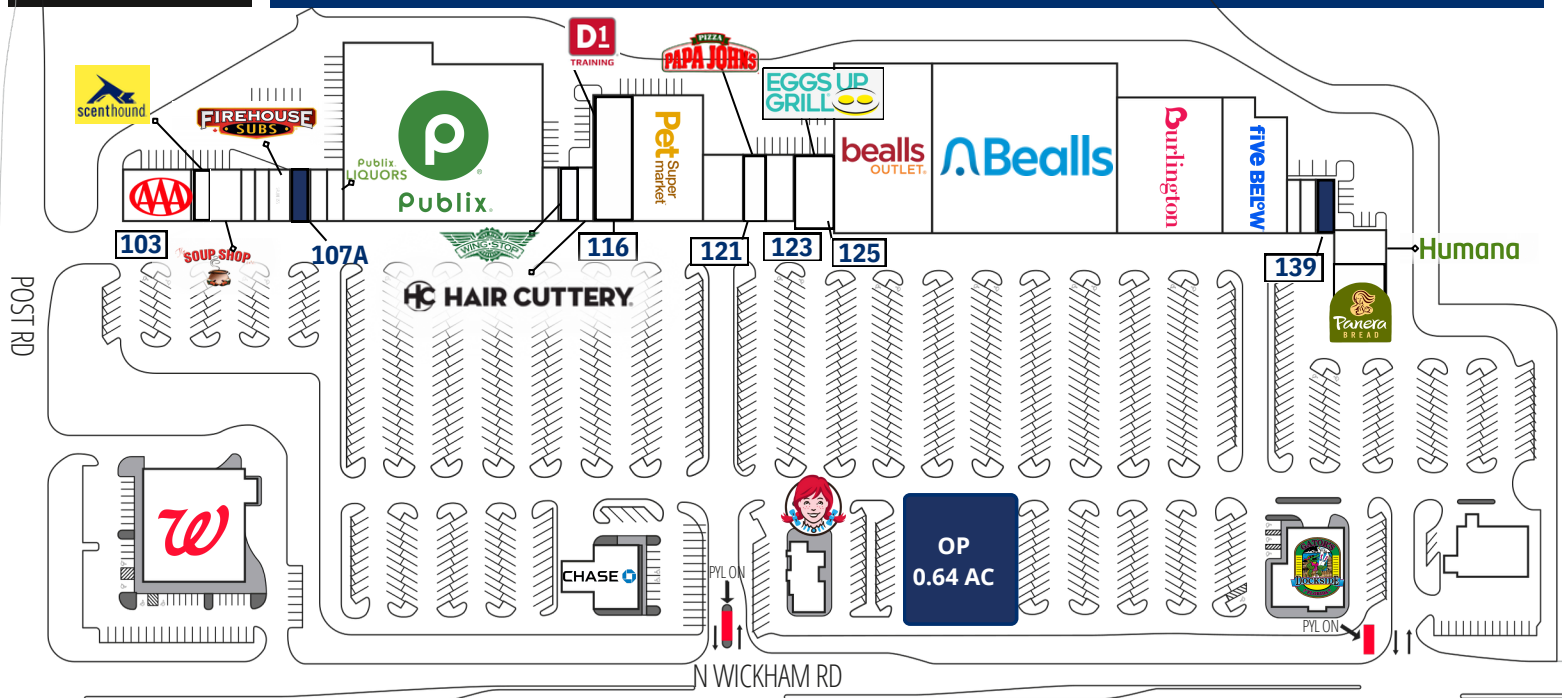




IN-LINE AND OUTPARCEL | FOR LEASE

POST COMMONS

4100 NORTH WICKHAM ROAD, MELBOURNE, FL 32935



Unit	Tenant	SF	Unit	Tenant	SF	Unit	Tenant	SF
101	AAA	4,800	113	Wing Stop	1,200	126	Beall's Outlet	21,000
103	Scenthound	1,200	113A	China King	1,200	130	Beall's Department Store	47,500
104	Soup Shop	2,400	114	Hair Cuttery	1,200	132	Burlington	20,960
105	Tobacco Zone	900	116	D1 Training	6,000	133	Five Below	10,019
106	Diane's Nails	1,200	117	Pet Supermarket	12,573	137	Cedars Restaurant	900
107	Firehouse Subs	1,500	120	America's Best	4,488	138	Global Tours & Travel	1,200
107A	AVAILABLE	1,200	121	Papa Johns	1,200	139	AVAILABLE	1,200
108	Bacco Wine Cafe	1,200	122	Aqua Rite	2,100	140	Humana Health	1,800
108A	Publix Liquors	1,340	123-125	Eggs Up Grill	3,000	144	Panera Bread	4,500
109	Publix	44,270				OP	AVAILABLE	.64 AC



Flavia Kanyago

Vice President, Sales and Leasing

(850) 264-3609

fkanyago@crossmarcservices.com

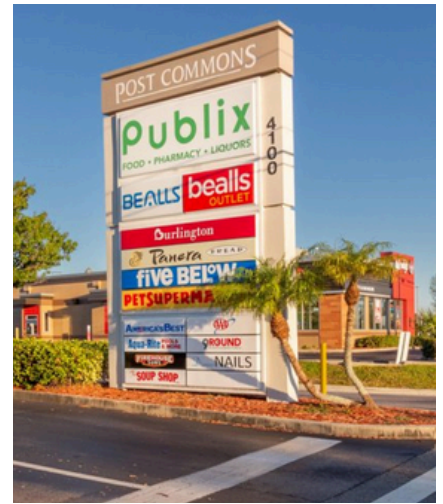


This information was obtained by sources deemed reliable, but we do not warrant or guarantee the accuracy or completeness thereof. Availability of this property is subject to prior sale or withdrawal of the property from the market at any time without notice.



IN-LINE AND OUTPARCEL | FOR LEASE POST COMMONS

4100 NORTH WICKHAM ROAD, MELBOURNE, FL 32935



Flavia Kanyago

Vice President, Sales and Leasing

(850) 264-3609

fkanyago@crossmarcservices.com



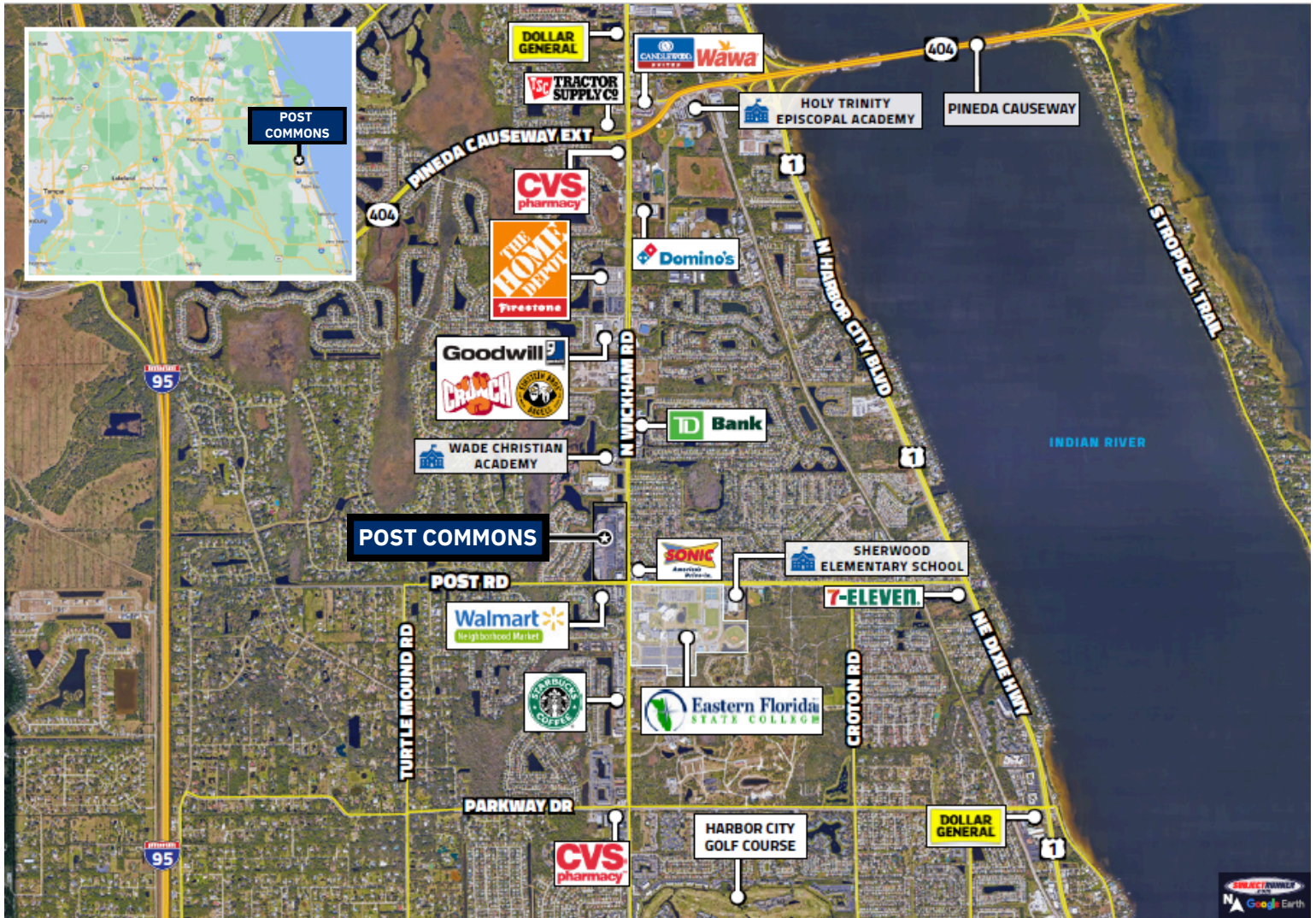
This information was obtained by sources deemed reliable, but we do not warrant or guarantee the accuracy or completeness thereof. Availability of this property is subject to prior sale or withdrawal of the property from the market at any time without notice.



IN-LINE AND OUTPARCEL | FOR LEASE

POST COMMONS

4100 NORTH WICKHAM ROAD, MELBOURNE, FL 32935



Flavia Kanyago

Vice President, Sales and Leasing

(850) 264-3609

fkanyago@crossmarcservices.com



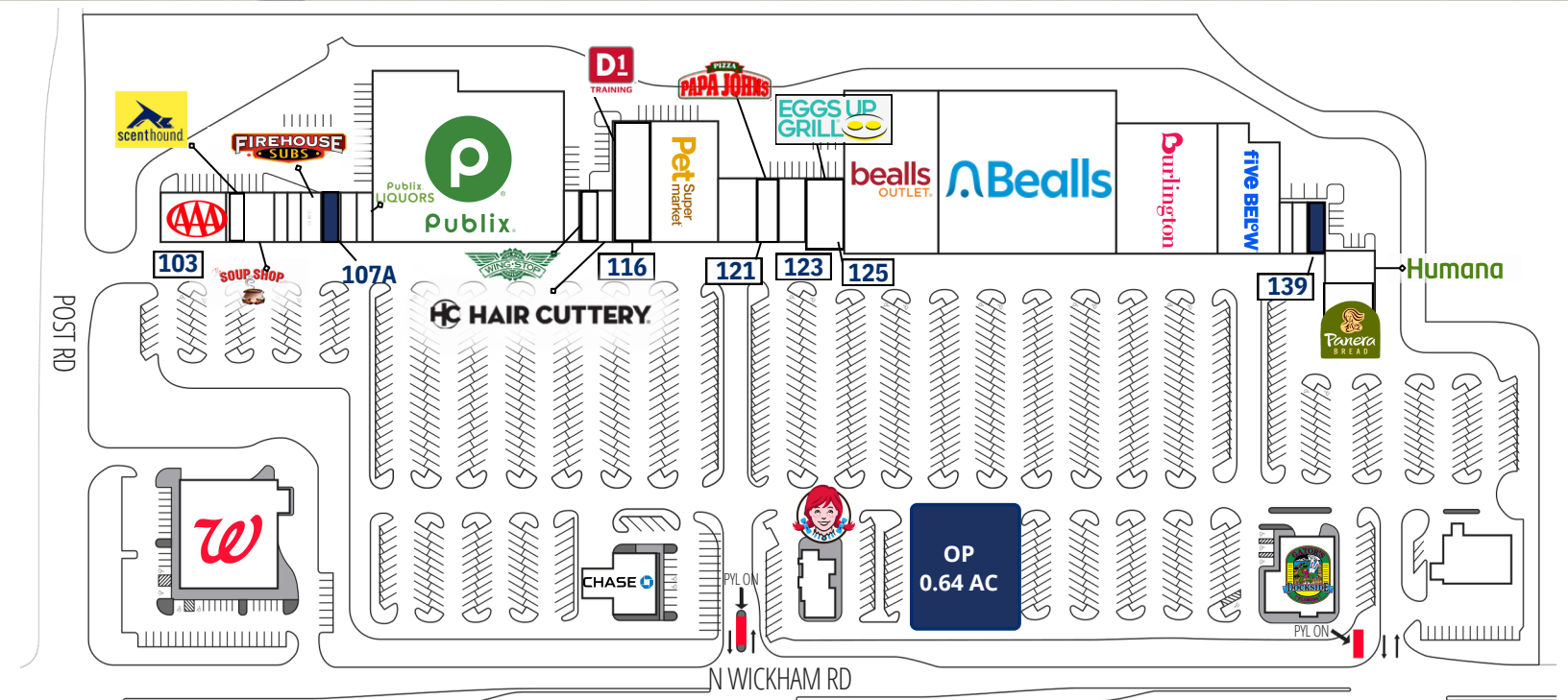
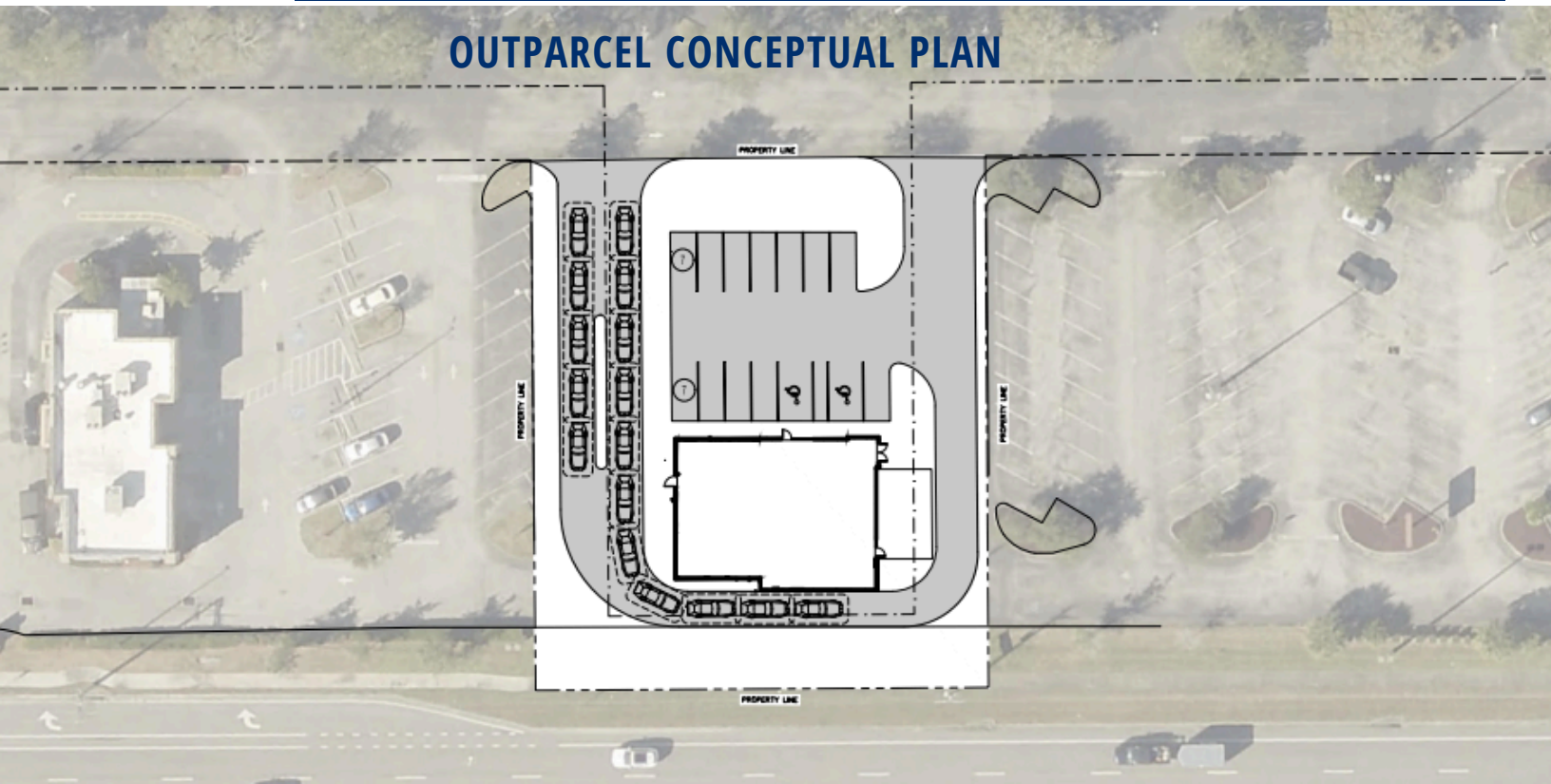
This information was obtained by sources deemed reliable, but we do not warrant or guarantee the accuracy or completeness thereof. Availability of this property is subject to prior sale or withdrawal of the property from the market at any time without notice.



OUTPARCEL | FOR LEASE POST COMMONS

4100 NORTH WICKHAM ROAD, MELBOURNE, FL 32935

OUTPARCEL CONCEPTUAL PLAN



Flavia Kanyago

Vice President, Sales and Leasing

(850) 264-3609

fkanyago@crossmarcservices.com



This information was obtained by sources deemed reliable, but we do not warrant or guarantee the accuracy or completeness thereof. Availability of this property is subject to prior sale or withdrawal of the property from the market at any time without notice.