

# iMed Naperville

1331 West 75th Street, Naperville, IL 60540



CONTACT:

**Mark Furlan**  
239.922.4541  
mfurlan@mcbrealestate.com



www.mcbrealestate.com

JOIN










## AVAILABLE SPACE

» 5,090 SF

## PROPERTY HIGHLIGHTS

- » iMed Naperville Medical Office is a Class 'A' building equipped with 18,000 square foot floorplates, 10-foot ceiling heights, a two-story lobby atrium, covered patient drop-off and pick-up areas and adjacent surface parking which can accommodate approximately 300 vehicles.
- » Anchored by Endeavor Health (formerly Edward-Elmhurst Health), which is part of a leading integrated health system in Illinois that serves more than 1.3 million patients across Chicagoland.
- » Situated in the medical corridor of Chicago's western suburbs, the asset is less than two miles from Endeavor Health Edward Hospital and is in proximity to four additional regional hospitals.
- » 5,090 SF on third floor available October 1, 2025

## DEMOGRAPHICS

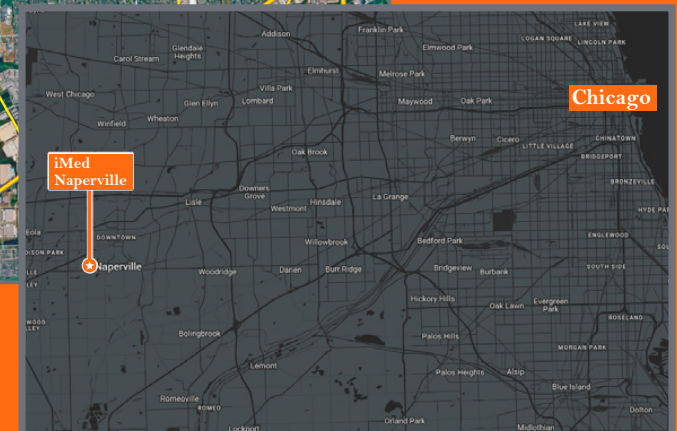
	 Drive Time	 Population	 Daytime Population	 Households	 Average Household Income	 Median Household Income	 Per Capita Income
1 Mile		8,574	4,741	3,276	\$206,647	\$159,853	\$78,978
3 Miles		99,957	79,814	36,999	\$196,570	\$143,595	\$72,907
5 Miles		258,079	190,649	93,363	\$195,267	\$144,801	\$70,726



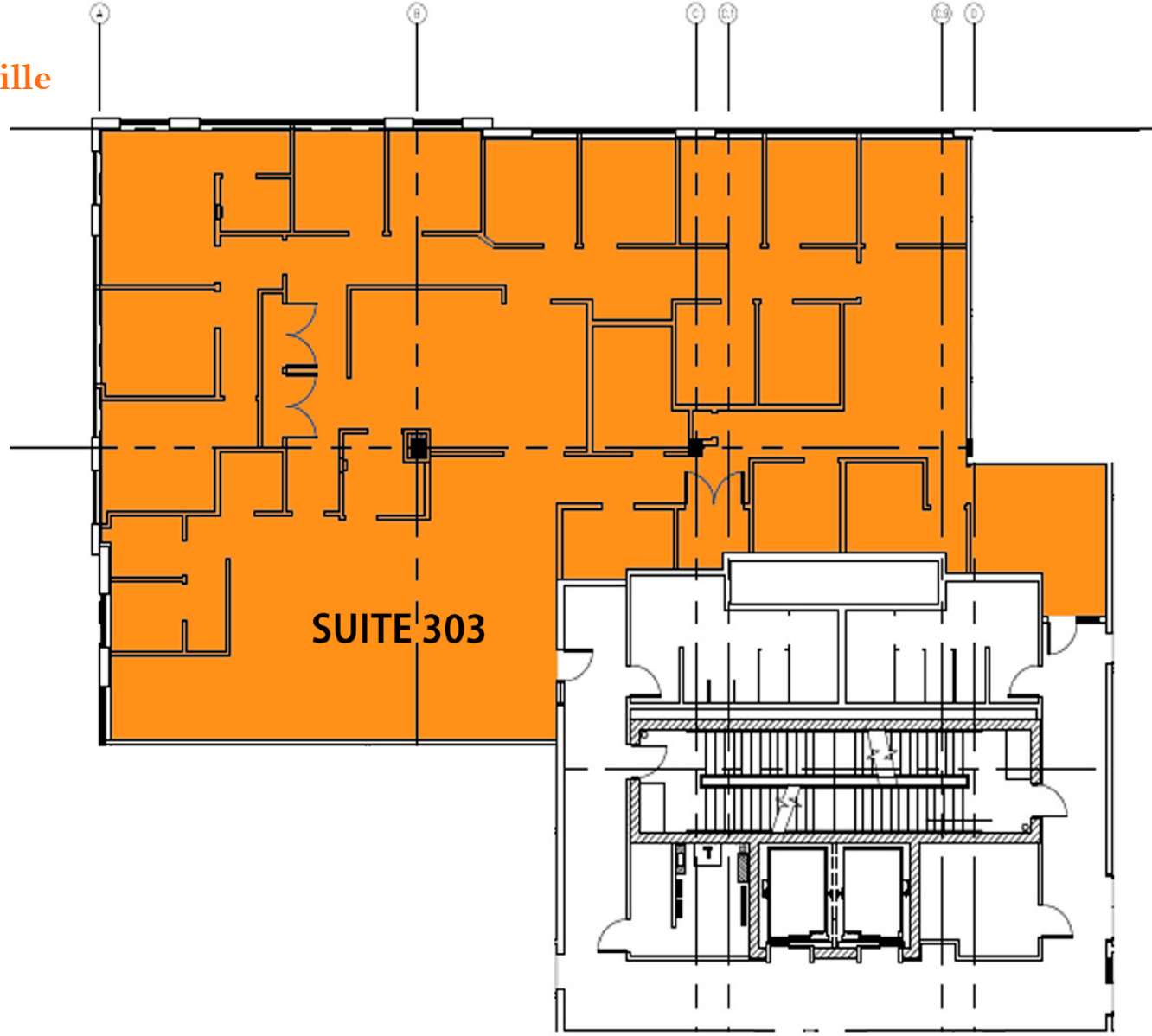


# iMed Naperville

Naperville, IL



iMed  
Naperville





# iMed Naperville

CONTACT:

**Mark Furlan**  
239.922.4541  
[mfurlan@mcbrealestate.com](mailto:mfurlan@mcbrealestate.com)



 **MCB**  
SCIENCE + HEALTH  
[www.mcbrealestate.com](http://www.mcbrealestate.com)